

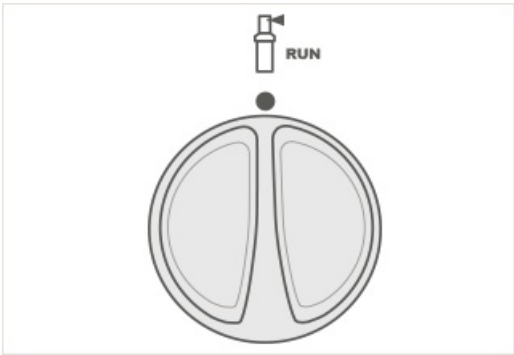
**Products:** X-Core [1]

**Topics:** FAQs, Troubleshooting

The X-Core allows the user to program the controller so that the sensor disables watering on only desired stations. For example, patio gardens that have pots under overhangs and roofs may not receive water when it rains and will continue to need to be watered during periods of rain. To program sensor override:

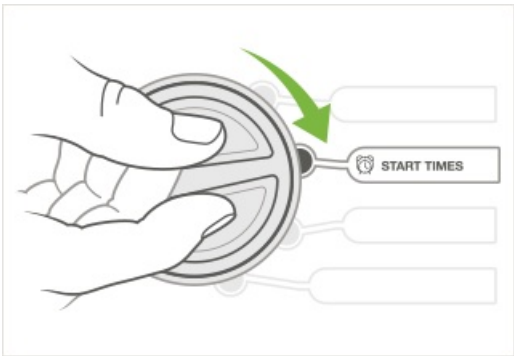
**NOTE:** The controller default is for the sensor to disable watering on all zones when rain occurs.

## Step 1



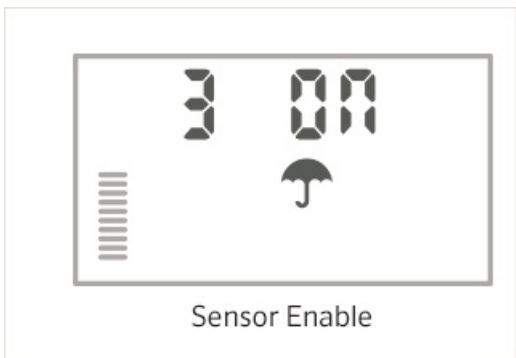
Turn the dial to the **RUN** position.


## Step 2



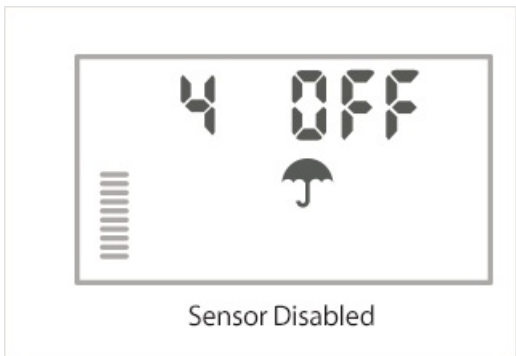
Press and hold the **minus (-)** button down while turning the dial to **START TIMES** position.

## Step 3



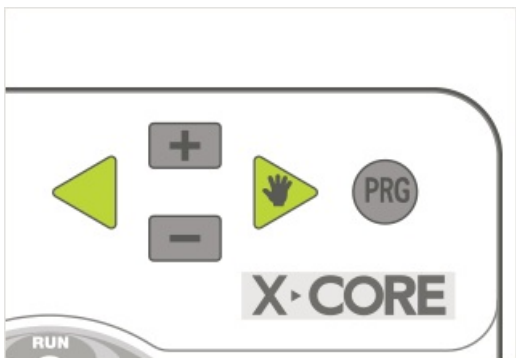
Release the **minus (-)** button. At this point, the display will show the station number, **ON**, and the  icon, will be flashing.

#### Step 4





Press the **plus (+)** or **minus (-)** button to **enable** or **disable** the sensor for the station shown. **ON = Sensor enabled** (will suspend irrigation). **OFF = Sensor disabled** (will allow watering).

#### Step 5



Use the **left arrow (<)** or **right arrow (>)** buttons to scroll to the next station that you would like to program the sensor override. Turn the dial to Run after programming sensor override.

When the X-Core receives an input from the sensor to disable watering, the display will indicate those stations that have been programmed to override the sensor. A station that is running in the sensor override mode will flash the  and  icons alternately.

**Rate this Article:**



No votes yet

## Related Links

---

Source URL (retrieved on *03/06/2015 - 01:18*): <http://www.hunterindustries.com/support/x-core-programmable-sensor-override>

### Links:

[1] <http://www.hunterindustries.com/irrigation-product/controllers/x-core>