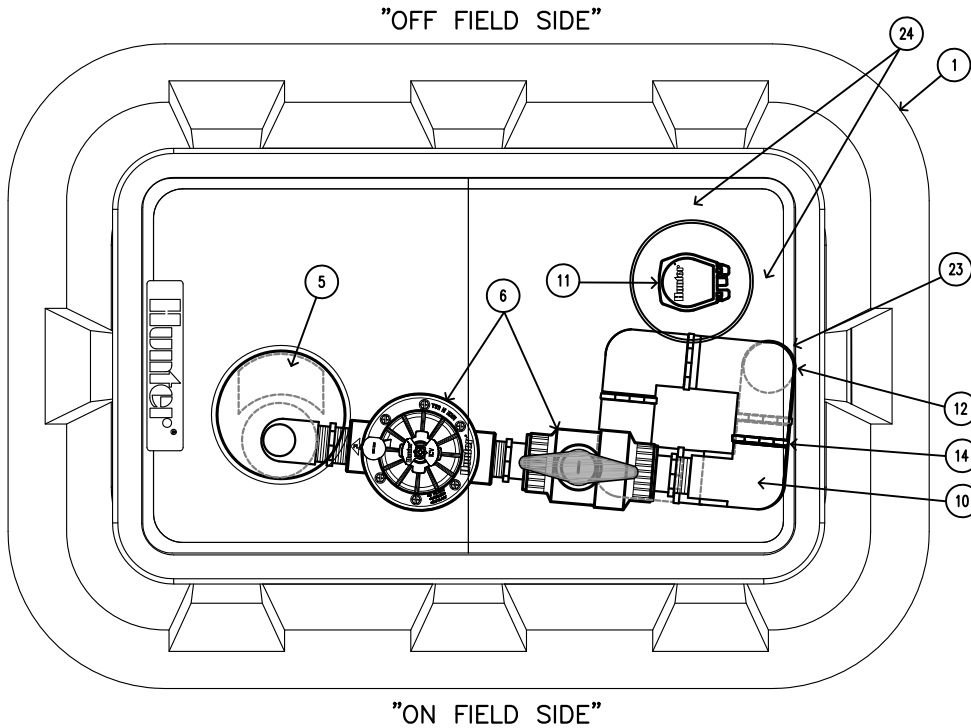


# STK-2

## SYNTHETIC TURF VAH ROTOR & ENCLOSURE SYSTEM

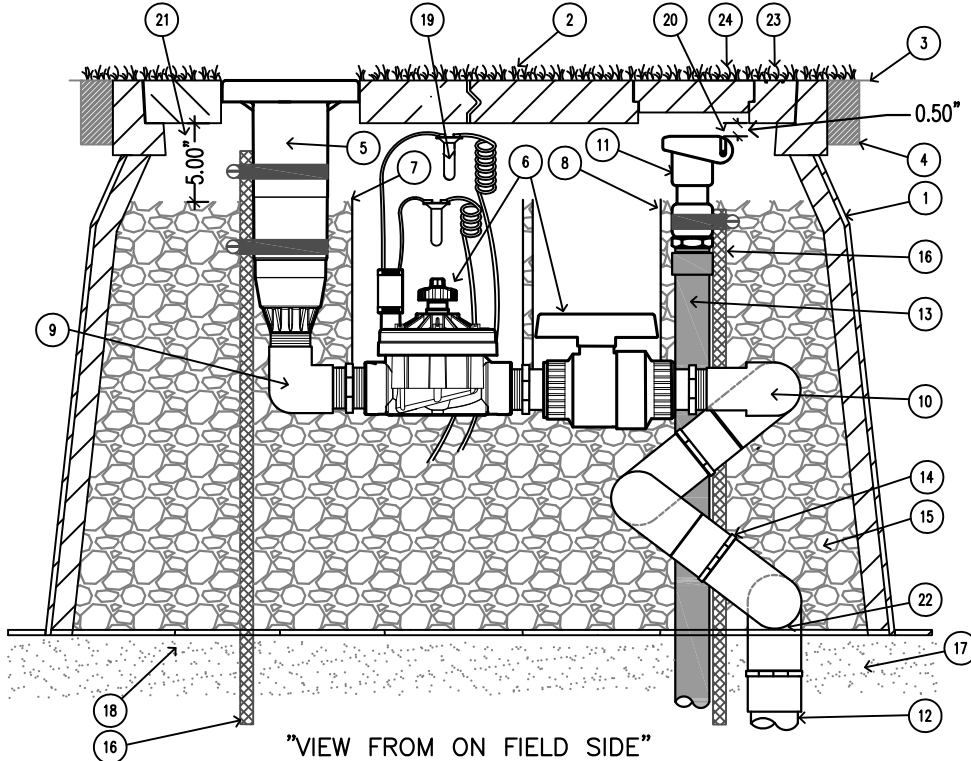


- 1 HUNTER ST173026B\* COMPOSITE BOX & 2-PIECE POLYMER-CONCRETE LID ASSEMBLY WITH CAST-IN OPENING TO SUPPORT ROTOR LATERAL THRUST PLUS CAST IN OPENING WITH CIRCULAR COVER FOR QUICK COUPLER ACCESS
- 2 OPTIONAL - SYNTHETIC TURF OR RUNNING TRACK MATERIAL ATTACHED TO COVERS
- 3 FINISHED GRADE SET TO FIELD PERIMETER TACK/GLUE BOARD OR AS PER SPECIFICATION
- 4 2" X 4" TACK/GLUE BOARD AS PER SPECIFICATION ALL SIDES
- 5 HUNTER STG-900 WITH RUBBER COVER KIT 473900 INSTALLED
- 6 HUNTER STVBVK KIT - INCLUDES HUNTER ICV-151G, 1 1/2" BALL VALVE (235 PSI RATED) PLUS ACME PIVOT CONNECTION FITTINGS
- 7 CONTROL VALVE SLEEVE, 8" DIAMETER X 11" TALL WITH 2 NOTCHED SECTIONS FOR PIPING
- 8 BALL VALVE SLEEVE, 6" DIAMETER X 11" TALL WITH 2 NOTCHED SECTIONS FOR PIPING
- 9 HUNTER 239800 ROTOR ADAPTER FITTING WITH 2 ACME PIVOT POINTS
- 10 HUNTER ST2008VA PREFABRICATED 2" SCH 80 PVC SWING JOINT WITH 6 ACME PIVOT POINTS TO PROVIDE MULTI-AXIS ARTICULATION AND ALIGNMENT OF ROTOR TO THE OPENING IN ENCLOSURE COVER
- 11 HUNTER HQ5RC QUICK COUPLING VALVE
- 12 SUPPLY PIPING AND FITTINGS - 2" MINIMUM FROM MAINLINE THROUGH TO ST2008VA SWING JOINT
- 13 SCH 80 PVC RISER SUPPLY PIPING AND FITTINGS - 1" MINIMUM
- 14 ACME THREADED PIVOTING POINTS (9 TOTAL)
- 15 3/4" MINUS WASHED GRAVEL
- 16 5/8" X 30" REBAR STAKE AND STAINLESS STEEL STRAPING
- 17 COMPACTED FIELD BASE MATERIAL AS PER SPECIFICATION
- 18 PROVIDE DRAINAGE VIA ACCESS TO FIELD DRAINAGE SYSTEM
- 19 WATERPROOF CONNECTIONS PER SPECIFICATION
- 20 TOP OF QUICK COUPLER SET 1/2" BELOW UNDERSIDE OF ENCLOSURE COVER
- 21 GRAVEL LEVEL 5" BELOW UNDERSIDE OF ENCLOSURE COVER (TO BOTTOM OF ROTOR'S COMPARTMENT)
- 22 ELEVATION OF SWING JOINT'S INLET - SET SECOND PIVOT POINT ON SWING JOINT WITH BOTTOM OF ENCLOSURE PER SIDE VIEW DETAIL DRAWING (26" BELOW ENCLOSURE TOP)
- 23 LOCATION OF SWING JOINT'S INLET - SET INLET AT CENTERLINE EDGE OF ENCLOSURE COVER PER TOP VIEW DETAIL DRAWING. INLET CAN BE SET DIRECTLY BELOW ENCLOSURE RIM AT CENTERLINE. INLET MUST NOT BE SET CLOSER TO ROTOR THAN SHOWN.
- 24 LOCATION OF QUICK COUPLER INLET PIPING - MEASURE INLET PIPING LOCATION AT TOP RIGHT HAND CORNER OF ENCLOSURE - 5" FROM TOP EDGE AND 5" FROM SIDE EDGE.

### XX STK-2 TOP VIEW

SCALE: 1.5" = 1'-0"

Hunter IRRIGATION DETAIL



### XX STK-2 SIDE VIEW

SCALE: 1.5" = 1'-0"

Hunter IRRIGATION DETAIL

\*ENCLOSURE DIMENSIONS  
 2 - PIECE COVER - 17" X 30"  
 EXPOSED RIM - 20" X 33"  
 OVERALL HEIGHT - 26"  
 BASE PAD - 27" X 41"