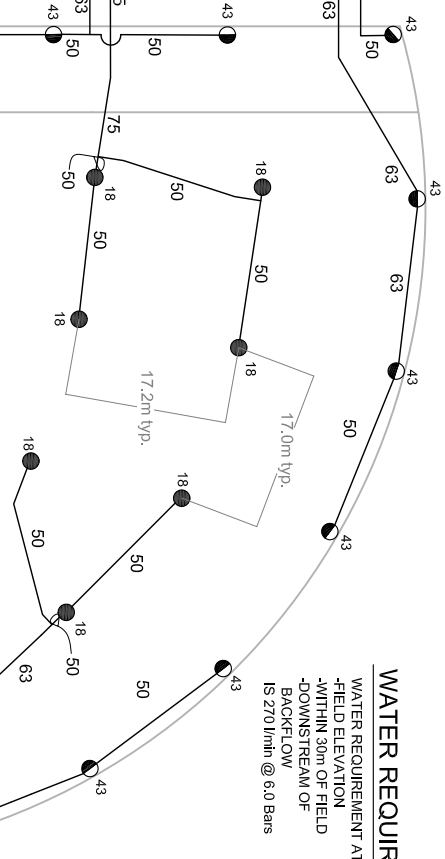


A3	66	51.2
1"		
A4	198	1.5"
1.5"		
26.9		



A9	270	1.5"
1.5"		
15.8		
A2	164	1.5"
1.5"		
26.9		

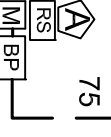
A6	198	1.5"
1.5"		
23.4		

A7	270	1.5"
1.5"		
15.8		

A1	164	1.5"
1.5"		
26.9		

A8	203	1.5"
1.5"		
15.8		

A5	264	66
A3		
51.2		



WATER REQUIREMENT

WATER REQUIREMENT AT
-FIELD ELEVATION
-WITHIN 30m OF FIELD
-DOWNSTREAM OF
-BACKFLOW
IS 270 l/min @ 6.0 Bars

IRRIGATION LEGEND

- PRODUCT DESCRIPTION
 - HUNTER I-40-04-SS-ON-B-XX/I-40-06-SS-ON-B-XX, NOZZLE AS SHOWN
 - HUNTER I-40-04-SS-B-XX/I-40-06-SS-B-XX, NOZZLE AS SHOWN
- NOZZLE PERFORMANCE:
 - #40 @ 4.0 Bars - 32.0 l/min 14.0m RADIUS
 - #43 @ 5.5 Bars - 66.1 l/min 18.6m RADIUS
 - #18 @ 5.5 Bars - 67.5 l/min 18.9m RADIUS
- HUNTER ICV/IBV ELECTRIC CONTROL VALVE SIZE AS SHOWN
- HUNTER HO-44-XX-AW QUICK COUPLER VALVE (OPTIONAL)
- HUNTER IC-1200-M SOLID STATE METAL CABINET CONTROLLER
- HUNTER SOLAR-SYNC-SEN ON SITE WEATHER SENSOR
- WATER METER MINIMUM SIZE @ 270 l/min IS 63mm
- BACKFLOW PREVENTER SIZED TO SYSTEM l/min
- MAINLINE PIPE
- LATERAL PIPE
- SLEEVING
- ISOLATION VALVE LINE SIZED

IRRIGATION NOTES

- SPRINKLER LOCATIONS ARE TO SCALE
- PIPE LOCATIONS ARE DIAGRAMMATIC
- ALL SPRINKLERS TO BE INSTALLED ON 32mm SCH 80 SWING JOINTS
- ALL COMPONENTS TO BE INSTALLED AS PER MANUFACTURERS RECOMMENDATIONS
- MAINLINE DEPTH TO BE NO LESS THAN 460mm
- LATERAL DEPTH TO BE NO LESS THAN 410mm
- ELECTRIC CONTROL VALVES TO BE COVERED WITH 12" VALVE BOX
- LOCATE VALVES/QCV'S OUT OF HIGH TRAFFIC AREAS
- WIRE SPLICE CONNECTIONS TO BE WATERPROOF
- OCV TO BE LOCATED IN 10" VALVE BOX
- ALL SLEEVES TO BE 2X PIPE RUN THROUGH THEM
- INSTALL ALL COMPONENTS AS PER LOCAL, STATE, FEDERAL CODES
- REFER TO HUNTER INSTALLATION DETAILS
- REFER TO HUNTER CATALOG FOR PERFORMANCE SPECIFICATIONS
- ADD HUNTER "FS" FOR DIRTY WATER VALVE
- ADD HUNTER "AS" FOR PRESSURE REGULATED VALVE

SPRINKLER PERFORMANCE DATA

ZONE	SIZE	FLOW m³/hr	PR m	DU m	SC ₁₀₀ m
A1	1.5"	9.8	164	26.9	.83
A2	1.5"	9.8	164	26.9	.83
A3	2-1"	7.9	132	51.2	.83
A4	1.5"	11.9	198	26.9	.83
A5	1.5"	15.8	264	26.9	.83
A6	1.5"	19.8	234	26.9	.83
A7	1.5"	19.8	234	26.9	.83
A8	1.5"	19.8	234	26.9	.83
A9	1.5"	16.2	270	15.8	.83

VALVE ID GUIDE

STATION NUMBER	VALVE SIZE	PRECIPITATION RATE mm/hr
A1	1.5"	19.0

Hunter Industries offers this plan as a general guide for estimating purposes and offers no indemnity, expressed or implied, for projects installed from this plan. Because of the many variables of every system and of every site we recommend that a qualified irrigation designer be consulted.



SOFTBALL FIELD

I-40 FOUR ROW DESIGN

Hunter Industries
1940 Diamond Street
San Marcos, California 92078
SpecPro Technical Assistance
1-800-319-4796
www.HunterIndustries.com