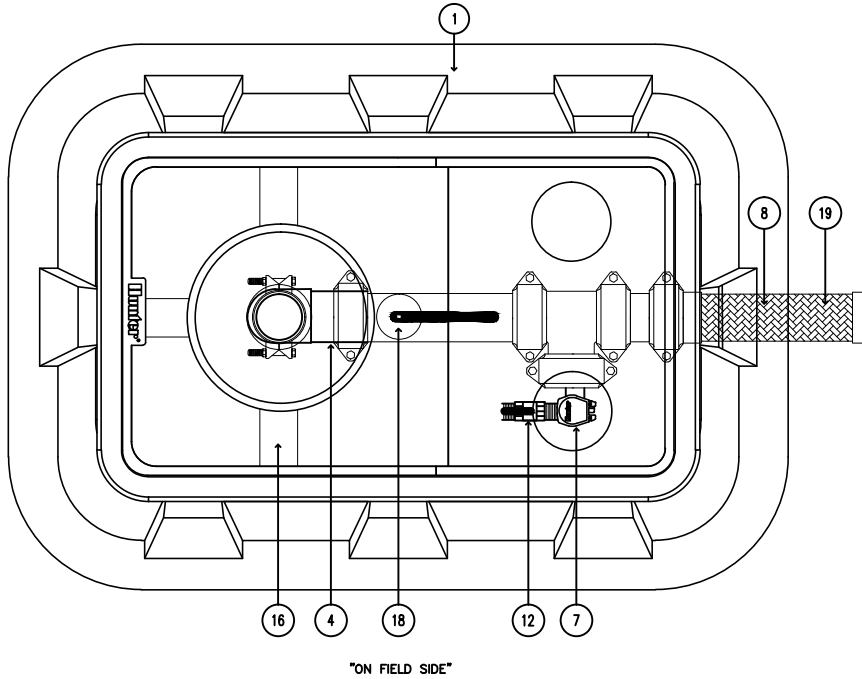
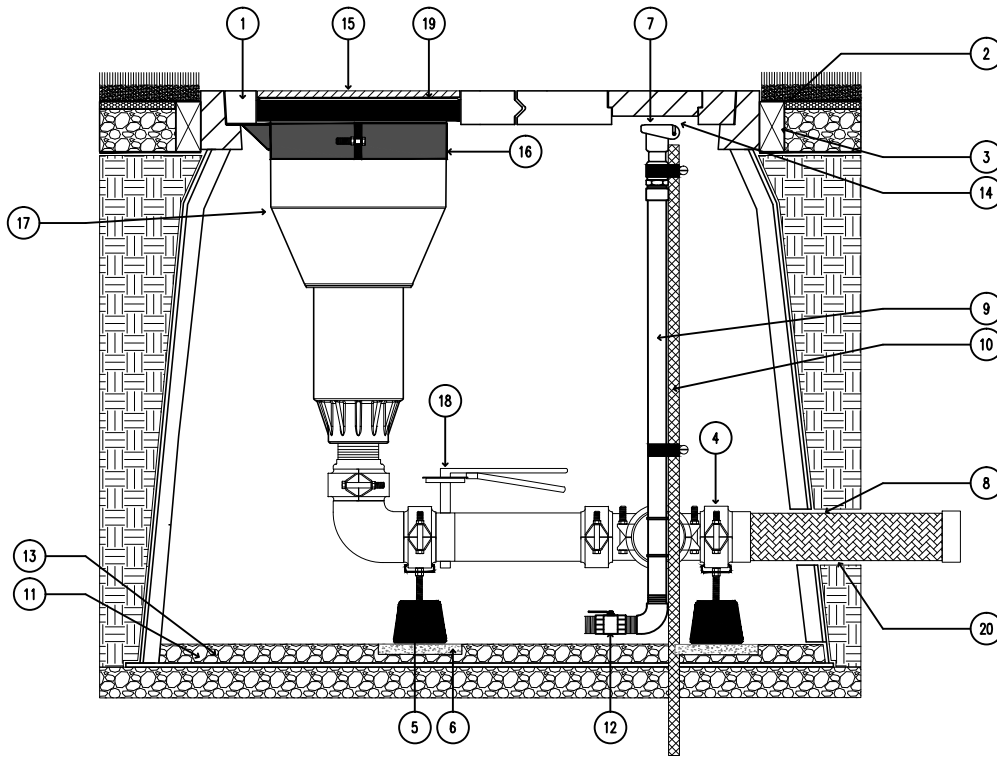


**STK-5V**  
SYNTHETIC TURF VAH ROTOR & ENCLOSURE SYSTEM  
**TOP VIEW**  
"OFF FIELD SIDE"



"ON FIELD SIDE"



"VIEW FROM ON FIELD SIDE"

**XX STK-5V SIDE VIEW "NO TURF OVER VAULT"**  
SCALE: N.T.S. IRRIGATION DETAIL

① HUNTER ST-243636B\* COMPOSITE VAULT & 4-PIECE POLYMER-CONCRETE COVER SET WITH CAST-IN OPENINGS TO SUPPORT ROTOR LATERAL THRUST PLUS CAST IN OPENING WITH CIRCULAR COVERS FOR QUICK COUPLER AND ON-OFF-AUTO SELECTOR ACCESS

② FINISHED GRADE SET TO FIELD PERIMETER TACK/GLUE BOARD OR AS PER SPECIFICATION

③ 2" X 4" (50mm X 102mm) TACK/GLUE BOARD AS PER SPECIFICATION ALL SIDES

④ HUNTER ST-BVF30K ISOLATION VALVE AND FITTING KIT WITH GROOVED CONNECTIONS AND 500 PSI RATED COUPLINGS SUFFICIENT TO CONNECT ROTOR TO MANIFOLD INLET

⑤ HUNTER ST-SPTK ADJUSTABLE MANIFOLD SUPPORT BLOCK ADJUSTED TO SUPPORT MANIFOLD WEIGHT TWO (2) REQUIRED

⑥ SUPPORT PAD AS 16" X 16" X 2" (41cm X 41cm X 50mm) CONCRETE STEPPING STONE OR AS PER SPECIFICATION (2)

⑦ HUNTER HQ-5SRC QUICK COUPLING VALVE SET DIRECTLY BELOW CIRCULAR QUICK-ACCESS PORT

⑧ HUNTER ST-H30K 3" (80mm) STAINLESS STEEL FLEXIBLE INLET PIPE

⑨ 1" (25mm) MINIMUM SCH 80 QUICK COUPLER SUPPLY PIPING AND FITTINGS OR AS PER SPECIFICATION

⑩ 5/8" X 48" (16mm X 122cm) REBAR STAKE WITH STAINLESS STEEL STRAPPING

⑪ COMPACTED BASE FIELD MATERIALS PER SPECIFICATIONS

⑫ BRASS MANUAL BALL VALVE INCLUDED/PROVIDED WITH #9 ST-BVF30K

⑬ PROVIDE DRAINAGE VIA ACCESS TO FIELD DRAINAGE SYSTEM

⑭ TOP OF QUICK COUPLER SET LESS THAN 1/2" (13mm) BELOW UNDERSIDE OF MAIN VAULT COVER TO ALLOW KEY ACTIVATION FROM ABOVE

⑮ HUNTER ST-IBS1600 RUBBER COVER AND INFILL BARRIER KIT WITH TRIM REFERENCE RINGS TO ALLOW HEIGHTS FROM STANDARD 1-1/4" (32mm) (INFILL APPLICATION) TO FLAT (NON-INFILL OR TRACK MATERIAL) APPLICATIONS

⑯ HUNTER ST-BKT1600 ROTOR HANGER AND ELEVATION ADJUSTMENT BRACKET

⑰ HUNTER ST-1600B ROTOR

⑱ ISOLATION BUTTERFLY VALVE WITH GROOVED CONNECTIONS INCLUDED/PROVIDED WITH #9 ST-BVF30K

⑲ HUNTER ST-FRP1600 MATERIAL ATTACHED TO FLATTENED ST-IBS1600 USING HUNTER ST-ADH ADHESIVE AND APPROVED PROCEDURES

⑳ WRAP FLEXIBLE INLET PIPING WITH HEAVY-DUTY PLASTIC PIPE WRAP TAPE PRIOR TO BACK-FILL AND COMPACTION

\*ENCLOSURE DIMENSIONS

4 - PIECE COVER - 24" X 36" (50cm X 76cm)

EXPOSED RIM - 26" X 38" (66cm X 96.5cm)

OVERALL HEIGHT - 36" (76cm)

BASE PAD - 42" X 48" (107cm X 122cm)