

IMMS

Platform: **Windows**
 Type: **Central Control Software**
 Controllers: **Up to 10,000**

Hunter's Irrigation Management & Monitoring Software (IMMS) is a PC-based software package that makes central control of large-scale irrigation systems affordable, usable, and comprehensible. IMMS is optimized for the Hunter ACC controller and accessories (including decoder controllers).

FEATURES

- Windows®-based programming and communications software
- Total control of each controller's functions
- Graphical user interface with customizable map-based navigation
- Map utility allows direct import of linework and layers
- Flow monitoring and reporting with Hunter ACC controllers
- Alarm reporting and detailed irrigation history reports
- Wireless and hardwired communication options, including Ethernet and GPRS
- Controller sharing of communications channels to reduce communications costs
- Compatible with water-saving Hunter Solar Sync® sensors, or optional ET Sensors

KEY SPECIFICATIONS

- Operating system: Microsoft Windows XP, Vista, Windows 7, Windows 8*
 - Minimum RAM: 512 MB
 - Minimum screen resolution: 1,024 x 768
 - Storage: At least 100 MB disk space
- * Windows is a registered trademark of the Microsoft Corporation

COMPATIBLE SENSORS

- **Flow-Sync®:** Hunter Flow-Sync sensor for ACC controllers (one per controller). Provides flow monitoring with diagnostic shutdowns in real time
- **Clik Sensors:** Each controller requires its own rain sensor for fast rain shutdowns. All Hunter Clik sensors are compatible with ACC and other Hunter controllers
- **ET Sensor:** ET Sensor platform is for use with IMMS-ET software
- **Solar Sync Sensor** (wired or wireless): Each controller can use its own SOLARSYNCSEN or WSS-SEN for smart, water-saving self-adjustment
 - Solar Sync sensors also provide rain and freeze shutoff functions
 - Solar Sync compatibility is included with the basic IMMS4CD software



ET Sensor

Height: 27 cm
 Width: 18 cm
 Depth: 31 cm



Wireless Solar Sync Sensor

(w/mounting arm)
 Height: 11 cm
 Width: 22 cm
 Depth: 2.5 cm

COMMUNICATION OPTIONS

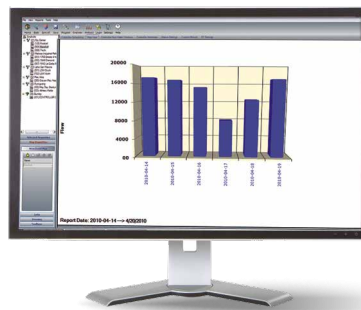
- ACC-COM-HWR, LAN, GPRS, GPRS-E
- Mounted internally to ACC controller
- RAD3: 450-470 MHz, UHF Radios, Power Output: 1 Watt, Bandwidth: 12.5 kHz narrowband
- ACC-HWIM: Hardwire interface module for 4-20 mA loop communications, installs inside ACC controller cabinets or pedestals
- ACC-COM-LAN requires fixed IP address from system administrators
- ACC-COM-GPRS requires a monthly service plan

HARDWARE COMMUNICATIONS CABLE

- GCBL shielded, two twisted-pair 1 mm wire with ground wire, up to 3 km between each device



Add a visual dimension to central control with background map graphics



Track flow and other vital statistics in both charts and spreadsheets

IMMS SOFTWARE

Model	Description
IMMS4CD	IMMS Graphics central control software
IMMS-ET-CD	Optional ET automatic weather adjustment software (requires IMMS4CD base model)

Note:

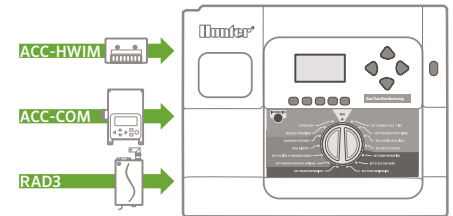
* Requires an ET Sensor at one or more ACC controller locations

COMMUNICATION OPTIONS FOR ACC INTERFACE

Model	Purpose
ACC-COM-HWR = Hardwire/radio module*	Supports hardwire and radio communication options
ACC-COM-LAN = Ethernet module*	Supports TCP/IP in Ethernet networks in addition to hardwire and radio sharing with local controllers
ACC-COM-GPRS-E = GPRS cellular data module*	Supports mobile data connection via GPRS phone in addition to hardwire and radio sharing with local controllers

Note:

* Also supports radio and hardwire



ACC wall mount communication components

USER-INSTALLED OPTIONS (SPECIFY SEPARATELY)

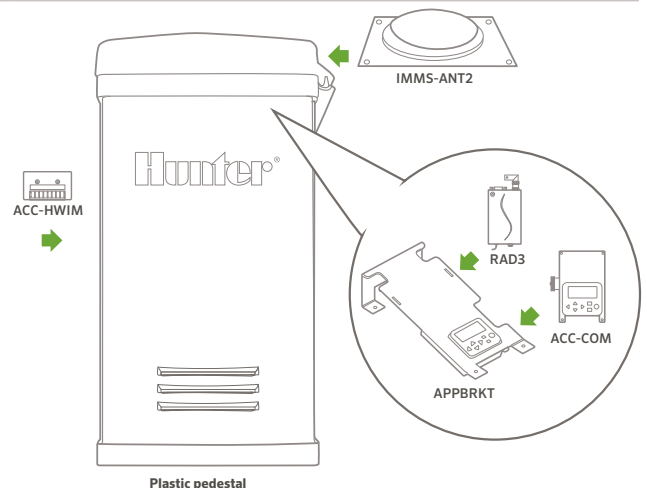
Model	Description	Purpose	
ACC-HWIM	Hardwire interface module required for hardwire connections	Provides surge protected terminals for hardwired cable connections	
RAD3	UHF radio module (North America), 450-470 MHz	UHF radio module for wireless connections (licence and antenna required and not included)	
RAD460INT	UHF radio module (International), 440-480 MHz "Consult factory for other international frequency ranges"	UHF radio module for wireless connections, international only (licence and antenna required and not included)	
APPBRKT	Communication bracket for plastic pedestals	Holds com modules and accessories in plastic pedestal (not required in wall mounts)	
APPBRKT2	Communication bracket for newer plastic pedestals (April 2017)	Holds com modules and accessories in new style plastic pedestal	
Model	Description	Options	Purpose
IMMS-CCC	Hardwire Central Interface	None = 120 VAC (North America) E = 230 VAC (Europe/international power) A = 230 VAC (Australia)	Hardwired central interface for connection to site via direct wire (GCBL cable), supplied with USB cable for connection to central computer, and plug-in transformer
GCBL*	100 = 30 m 300 = 90 m 500 = 150 m		Cable for all IMMS hardwired communications

Note:

* GCBL available in 300 m increments (up to 1,200 m)

RADIO ANTENNA OPTIONS (SPECIFY SEPARATELY)

Model	Description
IMMS-ANT2	Omni-directional antenna fits ACC plastic pedestal lid
IMMS-ANT3	Omni-directional antenna for wall- or pole-mount
IMMS-ANTYAGI3	High efficiency directional antenna for pole-mount
RA5M	High gain omni-directional mast antenna for roof- or pole-mount



ACC plastic pedestal communication components