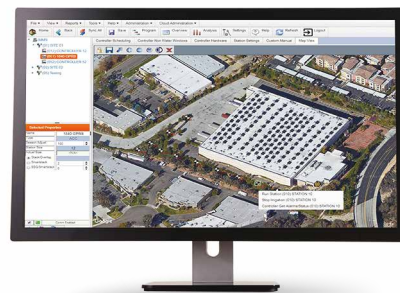


# IMMS™ ONLINE

Simplify central control of legacy Hunter ACC controllers and accessories with the web- or server-based IMMS software package.

## KEY BENEFITS

- Browser-based programming and communication software
- Cloud access or user-hosted enterprise versions available
- Graphical user interface with customizable, map-based navigation
- Flow monitoring and reporting with Hunter ACC controllers
- Alarm reporting and detailed irrigation history reports
- Automatic SMS text notification of alarms to your mobile device
- Unique mobile view allows instant status updates and fast command functions
- Cell, Ethernet, UHF radio, and hardwire cable connectivity options
- APIs available for custom integration into management systems
- Built-in Solar Sync® logic/Solar Sync Delay features for smart water savings
- User administration with multiple levels of access



Add a visual dimension to central control with background map graphics

## OPERATING SPECIFICATIONS

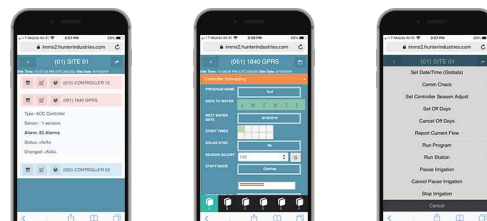
- Operates in most modern browsers (Internet Explorer® is no longer supported and may not display all screens correctly)
- Secure internet connection for web-hosted application

## USER-INSTALLED OPTIONS

- Solar Sync Sensor smart weather sensors, one per controller
- Flow sensors including Flow-Sync, WFS, and other approved equals, one per controller
- ROAM/ROAM XL license-free remote control (pre-wired controller connection)

## COMMUNICATION OPTIONS

- Cellular (LTE or 3G, where applicable)
- Ethernet with RJ-45 connection, low data requirements
- Shared connections via UHF radio or hardwire cable
  - Radio, 450-470 MHz narrow band
  - Hardwire, 4-20 mA via 4-conductor, shielded GCBL cable



Monitor and command IMMS-equipped controllers from your smartphone

Compatible with:



ACC Controller  
Page 114



ROAM Remote  
Page 127  
ROAM XL Remote  
Page 128



Solar Sync  
Sensor  
Page 136

Internet Explorer is a trademark of Microsoft Corporation.

COMMUNICATION MODEL CHART	
Model	Description
ACC-P2P-LTE*	Single-controller cell connection
ACC-COM-LTE*	Multi-controller cell connection
ACC-COM-LAN	Ethernet connection
ACC-COM-HWR	Radio & hardwire connection, use with:
RAD3	UHF radio
ACC-HWIM	Hardwire cable terminal & driver

Note:

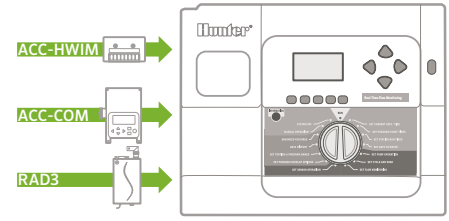
\*Requires monthly cell service plan

COMMUNICATION ACCESSORIES MODEL CHART	
Model	Description
GCBL-XXX HARDWIRE CABLE	Add -100, -300, -500 for length in feet (30, 90, 150 m)
IMMS-ANT2	Antenna for plastic pedestal lid
IMMS-ANT3	Antenna for wall or pole mount
IMMS-ANTYAGI3	High-efficiency directional antenna (pole mount)
RA-5M	High-gain omnidirectional base antenna (roof or pole mount)
APPBRKT2	Comm module bracket for plastic pedestals

IMMS SOFTWARE	
Model	Description
IMMS4CD	IMMS graphics central control software

COMMUNICATION OPTIONS FOR ACC INTERFACE	
Model	Purpose
ACC-COM-HWR = Hardwire/radio module*	Supports hardwire and radio communication options
ACC-COM-LAN = Ethernet module*	Supports TCP/IP in Ethernet networks in addition to hardwire and radio sharing with local controllers
ACC-P2P-LTE = Single controller cellular data module	Supports LTE data communications for a single controller
ACC-COM-LTE = LTE cellular data module*	Supports mobile data connection via GPRS phone in addition to hardwire and radio sharing with local controllers

Note: \* Also supports radio and hardwire

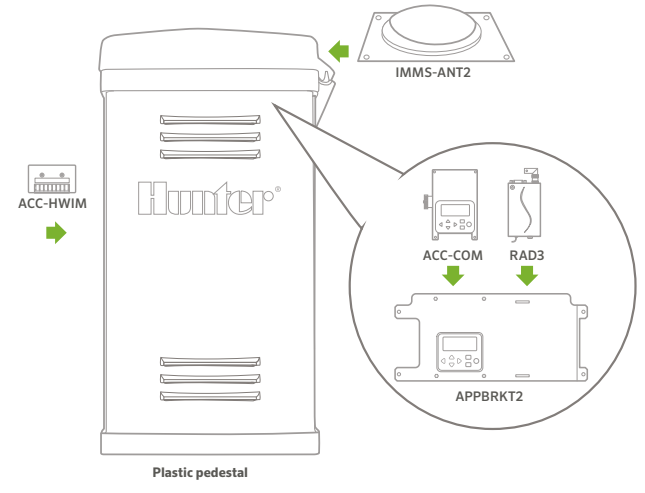


**ACC wall-mount communication components**

USER-INSTALLED OPTIONS (SPECIFY SEPARATELY)			
Model	Description		Purpose
ACC-HWIM	Hardwire interface module required for hardwire connections		Provides surge-protected terminals for hardwired cable connections
RAD3	UHF radio module (North America), 450-470 MHz		UHF radio module for wireless connections (license and antenna required and not included)
APPBRKT	Communication bracket for plastic pedestals		Holds comm modules and accessories in plastic pedestal (not required in wall mounts)
APPBRKT2	Communication bracket for newer plastic pedestals (April 2017)		Holds comm modules and accessories in new-style plastic pedestal
Model	Description	Options	Purpose
IMMS-CCC	Hardwire central interface	None = 120 VAC (North America) E = 230 VAC (Europe/ international power) A = 230 VAC (Australia)	Hardwired central interface for connection to site via direct wire (GCBL cable), supplied with USB cable for connection to central computer, and plug-in transformer
GCBL*	100 = 100' 300 = 300' 500 = 500'		Cable for all IMMS hardwired communications

Note: \* GCBL also available in 1,000' increments (up to 4,000')

RADIO ANTENNA OPTIONS (SPECIFY SEPARATELY)	
Model	Description
IMMS-ANT2	Omnidirectional antenna fits ACC plastic pedestal lid
IMMS-ANT3	Omnidirectional antenna for wall or pole mount
IMMS-ANTYAGI3	High-efficiency directional antenna for pole mount
RA5M	High-gain omnidirectional mast antenna for roof or pole mount



**ACC plastic pedestal communication components**



**EPA WaterSense**  
Add the WaterSense-labeled Solar Sync sensor to improve the water efficiency of this controller.