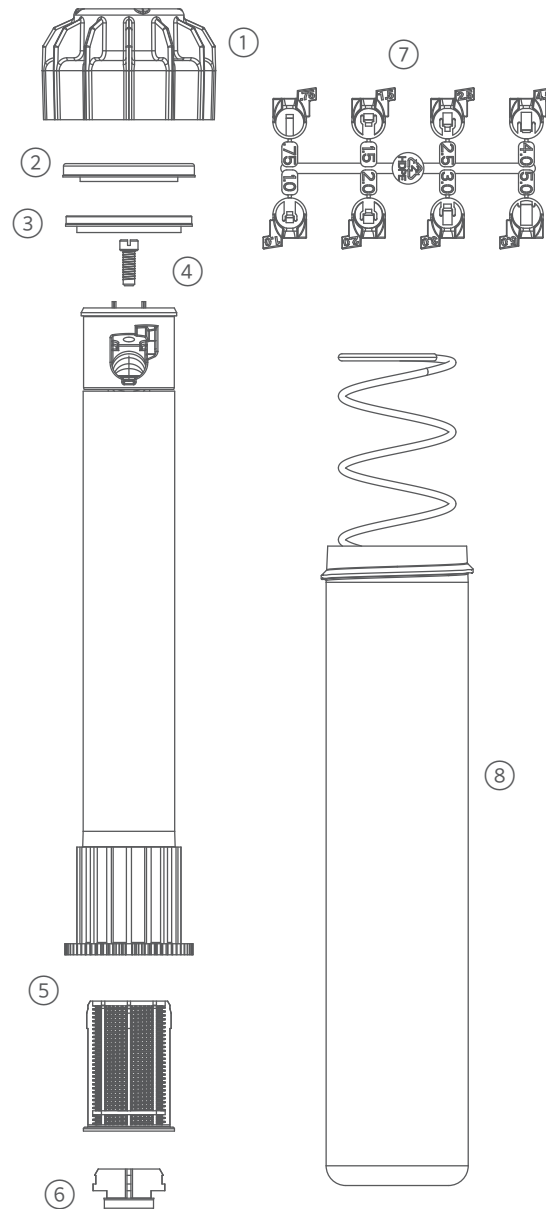


SRM-04: GEAR-DRIVEN ROTOR (AFTER JANUARY 2021)

ITEM	DESCRIPTION	CATALOG NO.
1	Body Cap	537400
2	Riser Seal	538100SP
3	Spring Seat	326500SP
4	Nozzle Retention Screw	537900
5	Screen	272000
6	Check Valve	462078SP
7	Nozzle Rack (with 8 Nozzles)	538701SP
8	Body 4" (10 cm)	537300



ROTORS

SRM-04, PGM-04, 06, 12: GEAR-DRIVEN ROTOR (BEFORE JANUARY 2021)

ITEM	DESCRIPTION	CATALOG NO.
1	Body Cap	270700
2	Riser Seal	326400SP
3	Spring Seat	326500SP
4	Nozzle Retention Screw (Bag of 25)	463262
5	Screen (White)	272000
6	Check Valve	462078SP
7	Screen/Check Valve Assembly	302500
8	Nozzle Rack (with 0.50, 0.75, 1.0, 1.5, 2.0, 3.0)	327000SP

