

IRRIGATION LEGEND

- PRODUCT DESCRIPTION**
- HUNTER I-40-04-SS-ON-XX/I-40-06-SS-ON-XX, NOZZLE AS SHOWN
 - HUNTER I-40-04-SS-XX/I-40-06-SS-XX, NOZZLE AS SHOWN
 - HUNTER HO-44-XX-AW QUICK COUPLER VALVE (OPTIONAL)
 - HUNTER ACC-1200 SOLID STATE METAL CABINET CONTROLLER
 - HUNTER ICV/IBV ELECTRIC CONTROL VALVE SIZE AS SHOWN
 - HUNTER HQ-44-XX-AW QUICK COUPLER VALVE (OPTIONAL)
 - HUNTER SOLAR-SYNC-SEN ON SITE WEATHER SENSOR
 - HUNTER ACC-1200 SOLID STATE METAL CABINET CONTROLLER
 - HUNTER WATER METER MINIMUM SIZE @ 91.0 GPM IS 2.0"
 - HUNTER WATER METER PREVENTER SIZED TO SYSTEM GPM
- NOZZLE PERFORMANCE:**
#15 @ 80 PSI - 18.2 GPM 59' RADIUS
#20 @ 80 PSI - 22.3 GPM 66' RADIUS
- ⊕ MAINLINE PIPE
— LATERAL PIPE
= SLEEVING
⊗ ISOLATION VALVE LINE SIZED
[HFS] HUNTER FLOW SENSOR IN LINE SIZED FLOW CLICK TEE "FCT"

IRRIGATION NOTES

1. SPRINKLER LOCATIONS ARE TO SCALE
2. PIPE LOCATIONS ARE DIAGRAMMATIC
3. ALL SPRINKLERS TO BE INSTALLED ON 1" SCH 80 SWING JOINTS
4. ALL COMPONENTS TO BE INSTALLED AS PER MANUFACTURERS RECOMMENDATIONS
5. MAINLINE DEPTH TO BE NO LESS THAN 18"
6. LATERAL DEPTH TO BE NO LESS THAN 16"
7. ELECTRIC CONTROL VALVES TO BE COVERED WITH 12" VALVE BOX
8. LOCATE VALVES/QCV'S OUT OF HIGH TRAFFIC AREAS
9. WIRE SPLICE CONNECTIONS TO BE WATERPROOF
10. QCV TO BE LOCATED IN 10" VALVE BOX
11. ALL SLEEVES TO BE 2X PIPE RUN THROUGH THEM
12. INSTALL ALL COMPONENTS AS PER LOCAL, STATE, FEDERAL CODES
13. REFER TO HUNTER INSTALLATION DETAILS
14. REFER TO HUNTER CATALOG FOR PERFORMANCE SPECIFICATIONS
15. ADD HUNTER "FS" FOR DIRTY WATER VALVE
16. ADD HUNTER "AS" FOR PRESSURE REGULATED VALVE

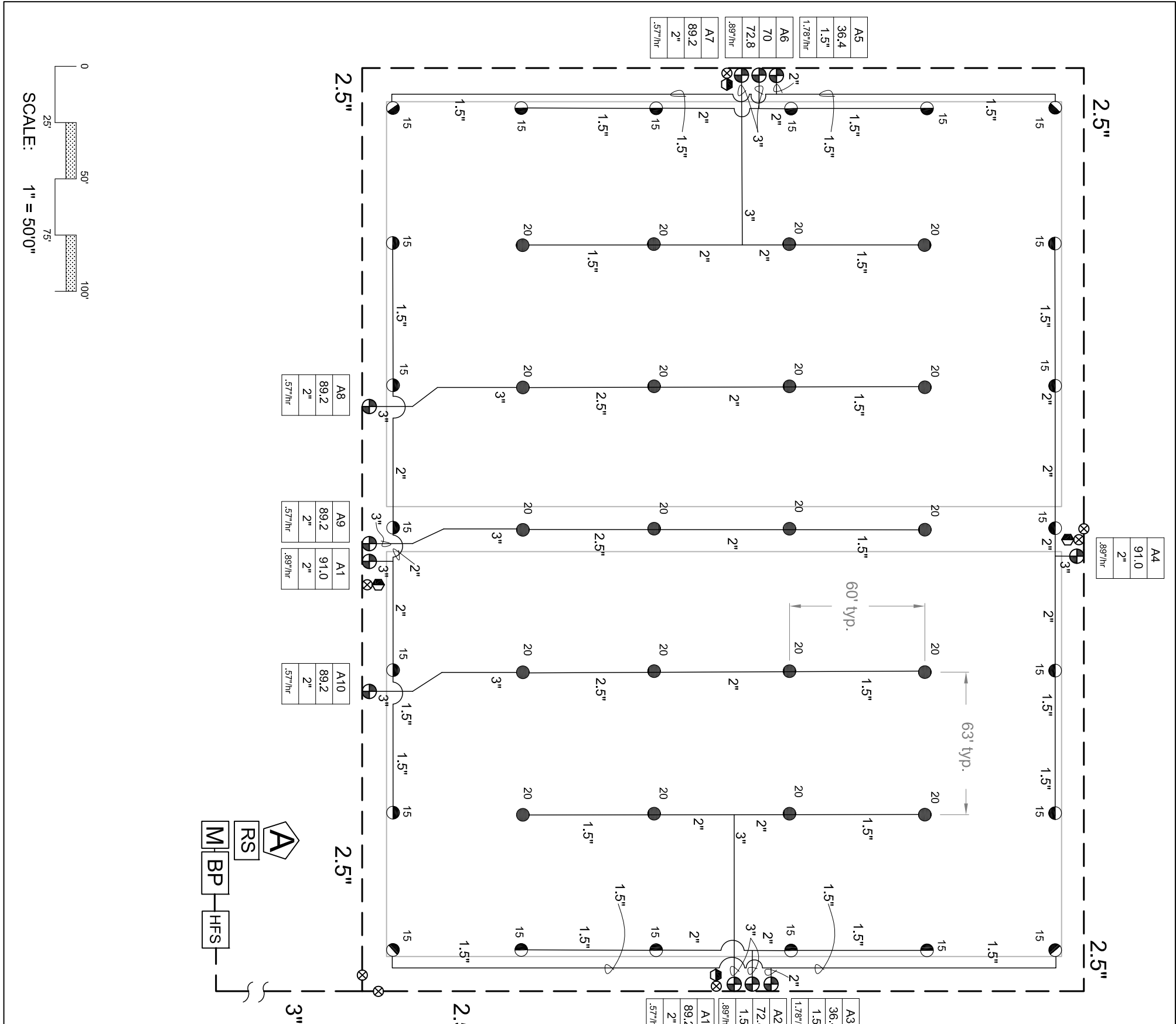
WATER REQUIREMENT SYSTEM PERFORMANCE DATA

-AT FIELD ELEVATION
-WITHIN 100' OF FIELD
-DOWNSTREAM OF BACKFLOW IS
91.0 GPM @ 90 PSI

VALVE ID GUIDE

A1	STATION NUMBER
55	GPM
1.5"	VALVE SIZE
.50"/hr	PRECIPITATION RATE

ZONE	SIZE	FLOW	PR	DU	SC ^(90% WINDOW)
A1	2"	91.0	.89"	.84	1.2
A2	1.5"	72.8	.89"	.84	1.2
A3	1.5"	36.4	1.78"	.84	1.2
A4	2"	91.0	.89"	.84	1.2
A5	1.5"	36.4	1.78"	.84	1.2
A6	1.5"	72.8	.89"	.84	1.2
A7	2"	89.2	.57"	.86	1.2
A8	2"	89.2	.57"	.86	1.2
A9	2"	89.2	.57"	.86	1.2
A10	2"	89.2	.57"	.86	1.2
A11	2"	89.2	.57"	.86	1.2



SCALE: 1" = 50'0"