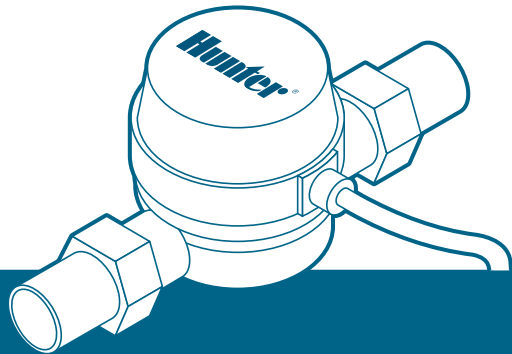


# HC Flow Meter

*HYDRAWISE-READY QUICK START GUIDE*



**Hunter**<sup>®</sup>

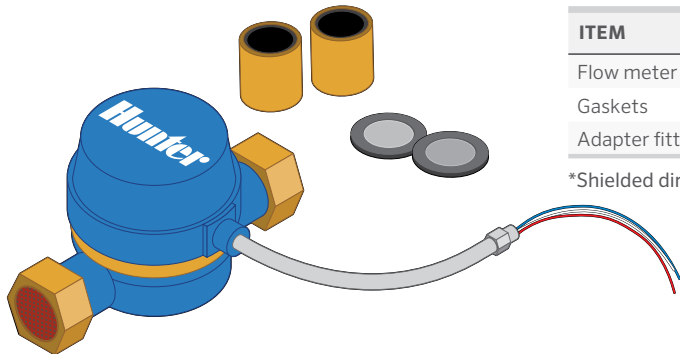
# Table of Contents

---

- 3** Box Contents
  - 4** HC Flow Meter
  - 5** Planning
  - 7** Installing
  - 9** Configuring
  - 10** Troubleshooting
- 

## HC Support

Thank you for purchasing the Hunter HC Flow Meter. In this Quick Start Guide, you will learn how to install and configure your flow meter. For support of Hydrowise™ cloud software or help with your Hydrowise account, visit [hunter.direct/hchelp](https://hunter.direct/hchelp). For specification information, refer to [hunter.direct/hcflow](https://hunter.direct/hcflow).



ITEM	QUANTITY
Flow meter	1
Gaskets	2
Adapter fittings	2

\*Shielded direct-burial cable must be used for installation.



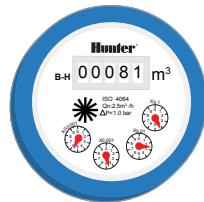
**Note:** This product is intended for use with professional-grade materials. It must be installed by a licensed irrigation contractor or licensed electrician.

# HC Flow Meter

---

## The flow meter consists of two parts:

- 1. Flow meter body:** The flow meter body contains an analogue dial for manual readings as follows. Your flow meter will have 3 wires protruding from the body. The wires need to be connected to the sensor inputs on the controller for readings in the software application. In all models, only 2 wires (blue and white) are used.
- 2. Adapter:** Each flow meter has an adapter to allow connection to your irrigation system.



---

**!** **Note:** The flow meter displays litres.

---

DIAL MARKING	MEASUREMENT UNIT
m <sup>3</sup>	1,000 Litres
X0.1	100 Litres
X0.01	10 Litres
X0.001	1 Litre
X0.0001	0.1 Litre

**Planning is an important step in the successful installation of your Hunter flow meter and the reliable operation of your irrigation system.**

**3. Flow meter location:** Flow meters are installed between the master valve and zone valves. To avoid false alerts, there should be no water taps or other uncontrolled water use on the downstream side of the flow meter. If all solenoids connected to the controller are not grouped together, it may be necessary to install more than one flow meter. For proper installation and optimal water flow, use the chart below when determining pipe length. The pipe bringing water into the flow meter needs to be 10 times longer than the width of the pipe. The pipe carrying water away from the meter needs to be 5 times the width of the pipe.

PIPE	10X-BEFORE	5X-AFTER
20 mm	200 mm	100 mm
25 mm	250 mm	125 mm
40 mm	400 mm	200 mm
50 mm	500 mm	250 mm



**Note:** Measurements in the chart are for minimum pipe length.

**4. Cable (shielded direct-burial cable must be used):** Two-wire cable is required. The cable gauge is determined by the total length of cable between the controller and the flow meter. The cable should consist of 2 dedicated wires and must not be in the same conduit or cable bunch as the solenoid wires. Do not share the common wire of the solenoids with the common of the sensors.

## Flow Meter Cable Length Chart

WIRE SIZE	MAX LENGTH
mm <sup>2</sup>	Metres
0.75 mm <sup>2</sup>	75
1.0 mm <sup>2</sup>	300

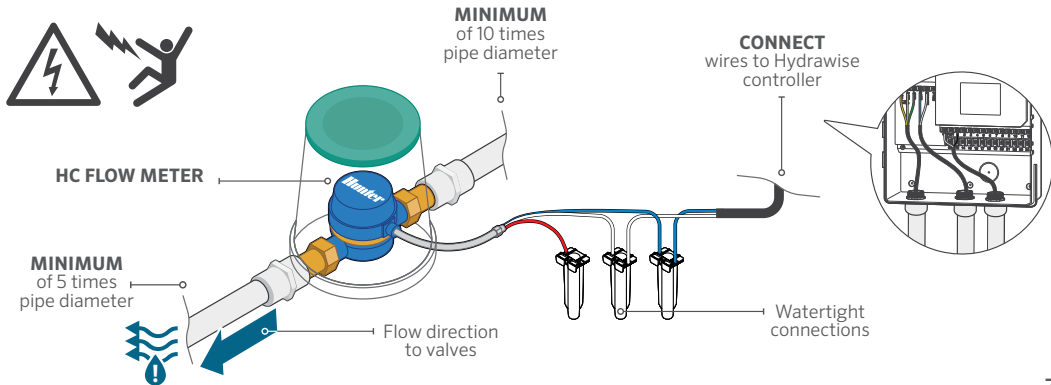


**Note:** Shielded direct-burial cable is commonly available. Manufacturers include Paige Electric and Regency Wire.

---

## The following instructions assume you have already installed your Hydrawise controller.

- 1. Flow meter body:** The flow meter has a marking on the body indicating the direction of water flow. Installation of the flow meter must be in the correct orientation with water flowing in the direction of the arrow on the flow meter body. All HC Flow Meters must be installed horizontally with the dial facing upward.



# Installing

**2. Connect flow meter wire:** Two-wire cable is required. The cable required to connect your flow meter must be dedicated to the flow meter and not shared with the common wire of the valves or other sensors. The cable gauge is determined by the total length of cable between the controller and the flow meter. The general rule is that 0.75 mm<sup>2</sup> wire is good for a run of up to 75 metres. Connect the wires to your Hydrawise controller.

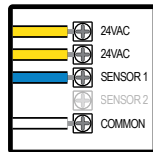
WIRE COLOUR	SENSOR TERMINAL BLOCK
White	Common
Blue	Sen 1 or Sen 2
Red	<b>Not used:</b> Wires should be capped with waterproof splice

\* Shield and bare wire should be connected to the controller ground terminal if available.

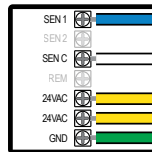


**Note:** All wire connections should be done using waterproof connectors, such as 3M 316IR or 3M DBY.

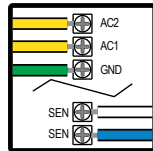
**HC**



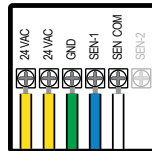
**HCC**



**PRO-C®**



**PRO-HC**





## Use your Hydrawise account to complete your flow meter configuration.

- 1. Log in to your account:** Enter your login information.
- 2. Create a flow sensor:** It is important that you select the correct flow meter when configuring your Hydrawise app. Choosing the wrong model may cause the Hydrawise controller to create false alerts in the software.

HC FLOW METER SELECTION CHART		
METER SIZE	M <sup>3</sup>	M <sup>3</sup> PULSE RATE
20 mm	20 mm flow meter	1 pulse per 1 litre
25 mm	25 mm flow meter	1 pulse per 10 litres
40 mm	40 mm flow meter	1 pulse per 10 litres
50 mm	50 mm flow meter	1 pulse per 10 litres

- 3. Assign zones to the flow sensor:** Refer to [hunter.direct/hc/help](https://hunter.direct/hc/help) for app/software setup information.

## Troubleshooting

---

**Need more helpful information on your product? Find tips on installation, controller programming, and more.**



---

? [hunter.direct/hchelp](https://hunter.direct/hchelp)

---



---

? [hydrowise.com/flowmeterinstall](https://hydrowise.com/flowmeterinstall)

---



---

? [hunter.direct/winterization](https://hunter.direct/winterization)

---



---

© 2019 Hunter Industries Inc. Hunter, the Hunter logo, and all other trademarks are property of Hunter Industries, registered in the U.S. and other countries.

**Hunter**<sup>®</sup>

---

**RESIDENTIAL & COMMERCIAL IRRIGATION** | *Built on Innovation*<sup>®</sup>

Learn more. Visit [hunterindustries.com](http://hunterindustries.com)

LIT-694-QG-FlowMeter-EM B 4/19