

# CENTRALUS™ BETA

IRRIGATION MANAGEMENT PLATFORM FOR ICC2 CONTROLLERS

Controllers: ICC2

## FEATURES

- Manage controller irrigation schedules and settings from anywhere
- Online interactive map display of all controllers with status and access
- Displays weather forecast based on controller location
- Automatic water savings when used with a Hunter Solar Sync® sensor
- Automatic watering adjustments based on weather forecast
- Full remote control capabilities for station and program operation, via smartphone
- Alarm and dial position monitoring and reporting
- User management functions, including controller sharing for crew member access
- Wi-Fi or Ethernet connectivity to existing routers
- Compatible with ROAM and ROAM-XL remote kits
- Conforms to industry-leading security standards
- ▶ EPA WaterSense approved when installed with a Solar Sync® sensor
- ▶ Enables remote management of all ICC2 features

## WIFIKIT FEATURES

- Easy field installation, new or retrofit
- Outdoor construction (mounts to controller cabinet)
- Secure, high-speed Wi-Fi connection with built-in antenna
- Includes access to Centralus irrigation management web application

## LANKIT FEATURES

- Easy installation, new or retrofit
- Outdoor construction (Ethernet connections made inside controller cabinet)
- Secure, high-speed Ethernet connection with RJ-45 connection to network
- Includes access to Centralus irrigation management web application

## SPECIFICATIONS

- Wi-Fi 802.11 b/g/n, 2.4 GHz
- LAN includes RJ-45 pigtail and adapter

## APPROVALS

- FCC, Industry Canada, CE, RCM



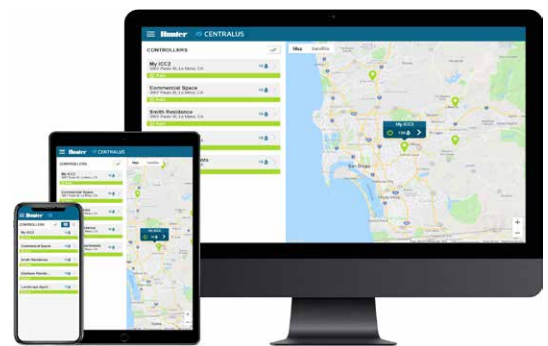
### WIFIKIT

Height: 4¼"  
Width: 2½" (installed)  
Depth: 1⅜"

### LANKIT

Height: 4¼"  
Width: 2½" (installed)  
Depth: 1⅜"

## WIFIKIT



### Centralus Software

Enable your ICC2 controller with next-generation management technology

WATER MANAGEMENT

ICC2	
Model	Description
WIFIKIT	Wi-Fi Communication Module for the ICC2 (requires network link)
LANKIT	Ethernet Communication Module for the ICC2 (requires network link)