



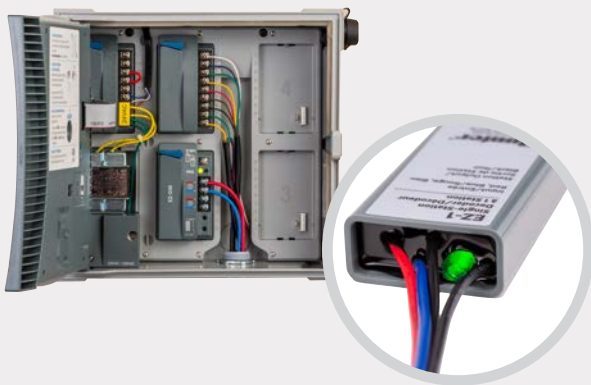
ICC2 CONTROLLER

Flexible control system with convenient flow, two-wire, and cloud-connectivity options

KEY BENEFITS

Multiple Wiring Options

Configure systems using conventional, two-wire, or hybrid operations up to 54 stations. Standard 24 VAC solenoids can coexist with innovative EZ Decoders for a flexible and cost-effective control solution.



Secure and Reliable Connection to the Centralus™ Platform

Upgrade to cloud-based control with Wi-Fi, Ethernet, or 4G LTE cellular connectivity using the Centralus Irrigation Management Platform.



Secure cloud access via smartphone

Learn more at centralus.hunterindustries.com.

Flow Monitoring via Centralus Communication Modules

Enable one flow sensor input with the addition of a WIFIKIT, LANKIT, or CELLKIT Communication Module for system-level flow rates and totals, reporting, alerts, and automatic high-flow shutdown.



Smart Water Savings with ET-Based Solar Sync™ Sensor

Maximise watering efficiency with daily automatic adjustments based on local solar radiation, rainfall, and temperature conditions.



hunter.info/ICC2metric

Hunter®

IN THE FIELD

- Challenge:** Your customer wants to expand the landscape to the opposite side of the property.

Solution: There's no need to run an expensive bundle of conventional wires to each valve. Simply plug in the EZ Decoder Output Module and route a two-wire path throughout the expansion to save time, money, and labour when installing the new zones.
- Challenge:** A property manager wants to add remote irrigation management and flow monitoring capabilities.

Solution: With three convenient options for internet connectivity, users can choose to leverage existing Wi-Fi or LAN (Ethernet) networks, or add a dedicated, secure 4G LTE cellular connection to cloud-based Centralus Software. All three communication modules also include a flow sensor input for critical flow monitoring capabilities.

IN THE DESIGN OFFICE

- The ICC2 Controller is a simple and affordable option for high-end residential and midsize commercial projects in both standalone and cloud-connected configurations.
- Flexible plug-in modules allow for convenient upgrade options, including system expansion, internet connectivity, and water management capabilities.
- Simplify commercial control systems with remote irrigation management and Centralus Software.



CONTROLLER COMPARISON

FEATURES	ICC2	Competitor 1	Competitor 2	Competitor 3
Maximum Station Count	54	48	48	36
Hybrid/Conventional/Two-Wire Control	●			
On-Site ET Sensor	●	●		
Wi-Fi Connectivity	●		●	
Ethernet Connectivity	●		●	
4G LTE Cellular Connectivity	●	●	●	●
Flow Monitoring	●	●	●	●
Maintenance Remote	●			
Cost	\$	\$\$\$	\$\$\$\$\$	\$\$\$\$\$