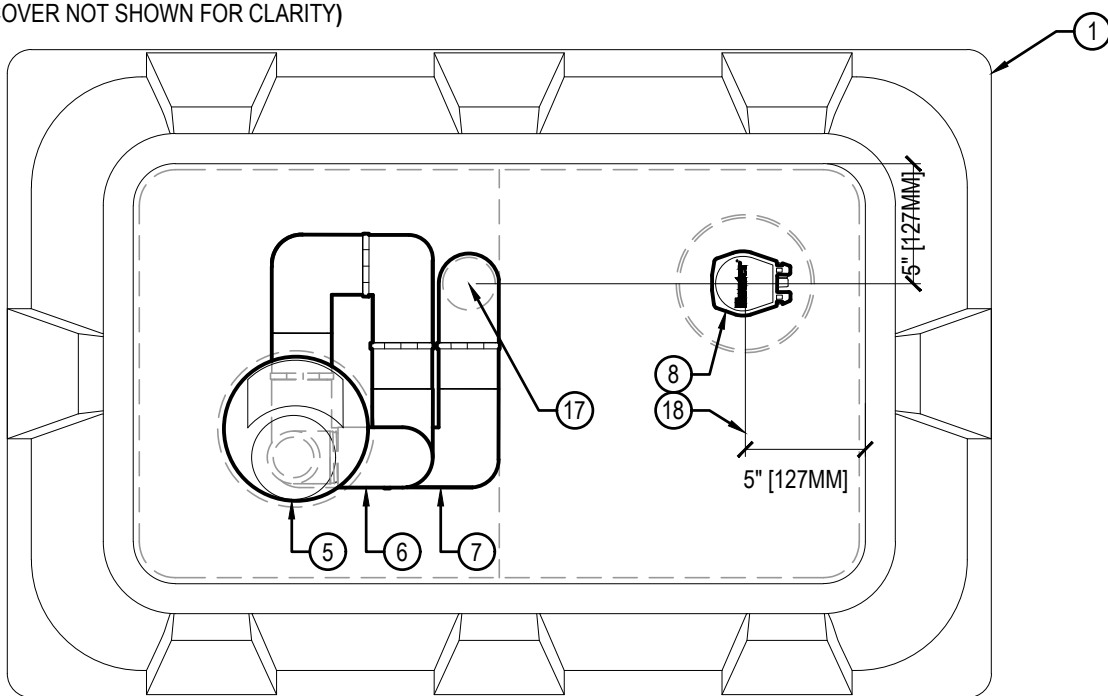


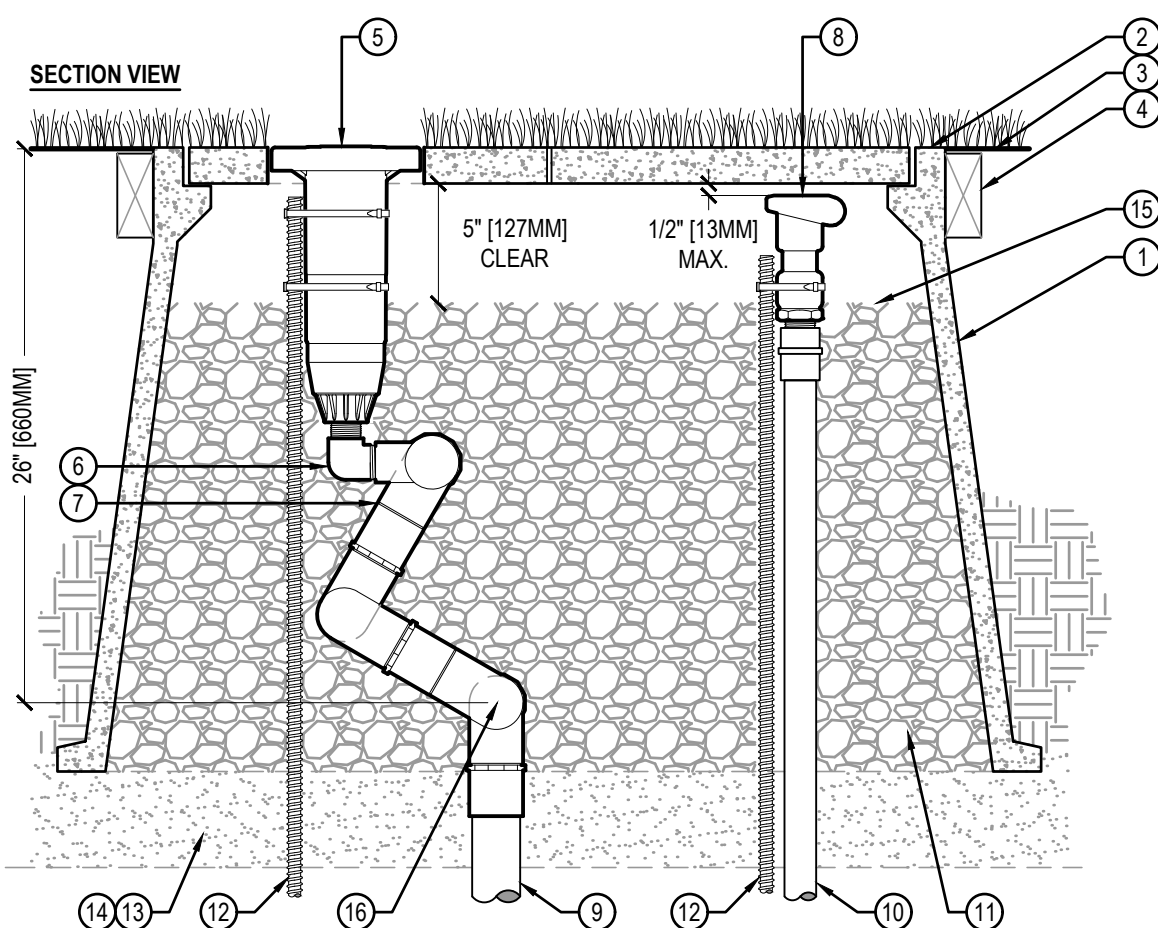
PLAN VIEW
(COVER NOT SHOWN FOR CLARITY)



LEGEND

- ① HUNTER ST173026B* COMPOSITE BOX & 2-PIECE POLYMER-CONCRETE LID ASSEMBLY WITH CAST-IN OPENING TO SUPPORT ROTOR LATERAL THRUST PLUS CAST IN OPENING WITH CIRCULAR COVER FOR QUICK COUPLER ACCESS
- ② SYNTHETIC TURF GLUED TO COVERS (OR AS SPECIFIED)
- ③ FINISHED GRADE SET TO FIELD PERIMETER TACK/GLUE BOARD OR AS SPECIFIED
- ④ TACK/GLUE BOARD AS SPECIFIED (ALL SIDES)
- ⑤ HUNTER STG-900 WITH RUBBER COVER KIT 473900 INSTALLED
- ⑥ HUNTER 239800 & 239300 ROTOR ADAPTER FITTING WITH 3 ACME PIVOT POINTS
- ⑦ HUNTER ST2008VA PREFABRICATED 2" SCH 80 PVC SWING JOINT WITH 6 ACME PIVOT POINTS TO PROVIDE MULTI-AXIS ARTICULATION AND ALIGNMENT OF ROTOR
- ⑧ HUNTER HQ5RC QUICK COUPLING VALVE
- ⑨ LATERAL PIPING AND FITTINGS - 2" MINIMUM (OR AS SPECIFIED) FROM CONTROL VALVE TO ST2008VA SWING JOINT
- ⑩ SCH 80 PVC RISER SUPPLY PIPING AND FITTINGS - 1" MINIMUM
- ⑪ 3/4" MINUS WASHED GRAVEL
- ⑫ 5/8" X 30" REBAR STAKE AND STAINLESS STEEL PIPE CLAMPS
- ⑬ COMPACTED FIELD BASE MATERIAL AS SPECIFIED
- ⑭ PROVIDE DRAINAGE VIA FIELD DRAINAGE SYSTEM
- ⑮ GRAVEL LEVEL 5" BELOW UNDERSIDE OF ENCLOSURE COVER (TO BOTTOM OF ROTOR'S COMPARTMENT)
- ⑯ ELEVATION OF SWING JOINT INLET - SET SECOND PIVOT POINT ON SWING JOINT WITH BOTTOM OF ENCLOSURE PER SECTION VIEW DRAWING (26" BELOW ENCLOSURE TOP)
- ⑰ LOCATION OF SWING JOINT INLET - SET INLET AT EDGE BETWEEN ENCLOSURE COVERS & LOCATE 5" FROM THE TOP OF COVER PER PLAN VIEW DRAWING. INLET MUST NOT BE SET CLOSER TO ROTOR THAN SHOWN.
- ⑱ LOCATION OF QUICK COUPLER INLET - MEASURE INLET PIPING LOCATION AT TOP RIGHT HAND CORNER OF ENCLOSURE - 5" FROM TOP EDGE AND 5" FROM SIDE EDGE.

*ENCLOSURE DIMENSIONS
 2 - PIECE COVER - 17" X 30"
 EXPOSED RIM - 20" X 33"
 OVERALL HEIGHT - 26"
 BASE PAD - 27" X 41"



SYNTHETIC TURF KIT (STK-1) WITH REMOTE VALVE IN SYNTHETIC TURF

Hunter® STK.1.02

NO SCALE