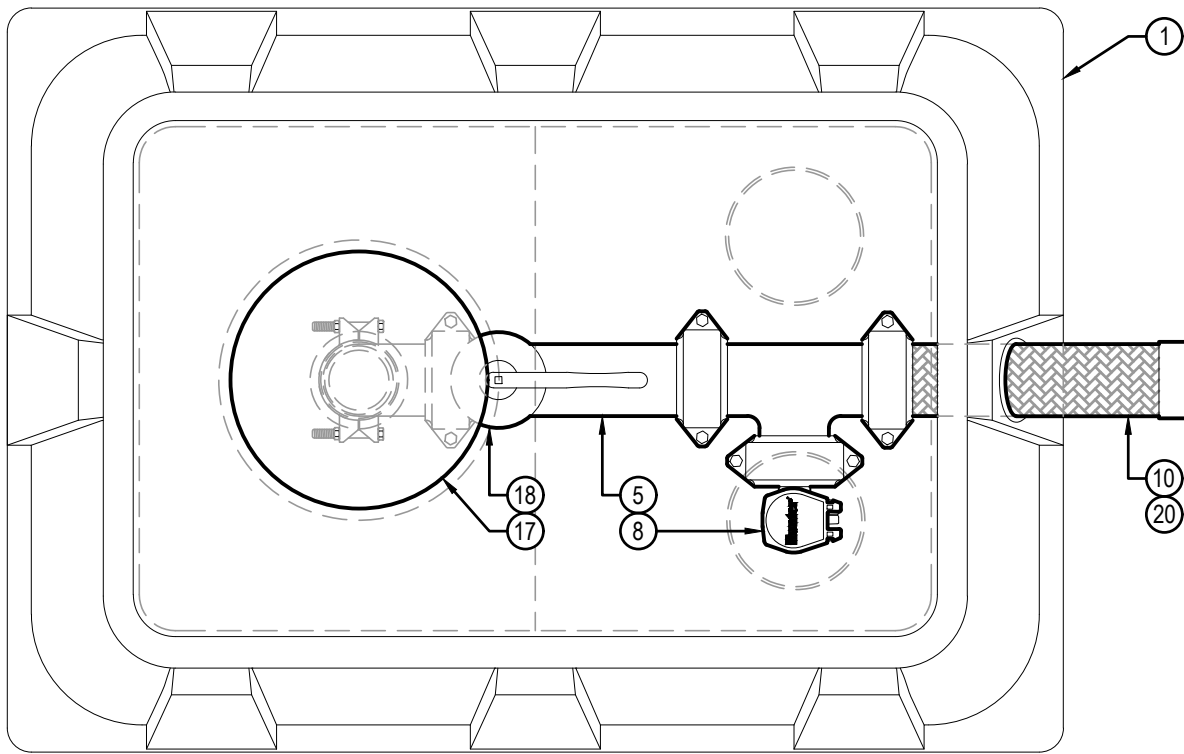


PLAN VIEW

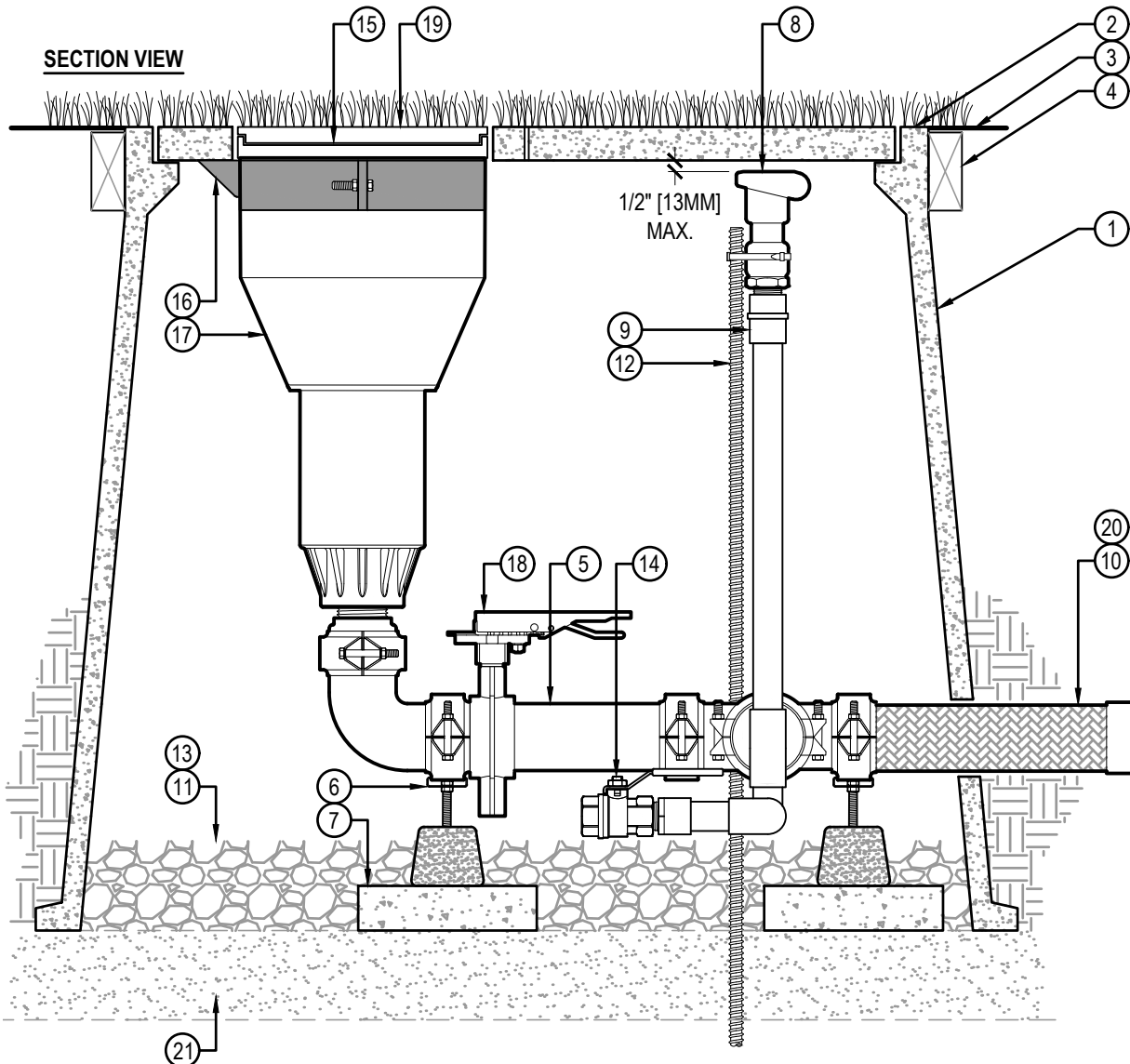
(COVER NOT SHOWN FOR CLARITY)



LEGEND

- ① HUNTER ST243636B* COMPOSITE VAULT & 4-PIECE POLYMER-CONCRETE LID ASSEMBLY WITH CAST-IN OPENING TO SUPPORT ROTOR LATERAL THRUST PLUS CAST IN OPENINGS WITH CIRCULAR COVERS FOR QUICK COUPLER AND ON-OFF-AUTO SELECTOR ACCESS
- ② SYNTHETIC TURF GLUED TO COVERS (OR AS SPECIFIED)
- ③ FINISHED GRADE SET TO FIELD PERIMETER TACK/GLUE BOARD OR AS SPECIFIED
- ④ TACK/GLUE BOARD AS SPECIFIED (ALL SIDES)
- ⑤ HUNTER ST-BVF30K ISOLATION VALVE AND FITTING KIT WITH GROOVED CONNECTIONS AND 500 PSI RATED COUPLINGS
- ⑥ HUNTER ST-SPTK ADJUSTABLE MANIFOLD SUPPORT BLOCK ADJUSTED TO SUPPORT MANIFOLD WEIGHT; (2) REQUIRED
- ⑦ SUPPORT PAD (16" X 8" X 2" [41 CM X 20.5CM X 50MM]) CONCRETE STEPPING STONE OR AS SPECIFIED; (2) REQUIRED
- ⑧ HUNTER HQ5RC QUICK COUPLING VALVE SET DIRECTLY BELOW CIRCULAR QUICK-ACCESS PORT
- ⑨ QUICK COUPLER RISER AND FITTINGS: 1" [25MM] MINIMUM SCH. 80 OR AS SPECIFIED
- ⑩ HUNTER ST-H30K 3" [80MM] STAINLESS STEEL FLEXIBLE INLET PIPE
- ⑪ 3/4" MINUS WASHED GRAVEL
- ⑫ 5/8" X 48" REBAR STAKE AND STAINLESS STEEL PIPE CLAMPS
- ⑬ PROVIDE DRAINAGE VIA FIELD DRAINAGE SYSTEM
- ⑭ BRASS MANUAL BALL VALVE (INCLUDED WITH ST-BVF30K)
- ⑮ HUNTER ST-IBS1600 RUBBER COVER AND INFILL BARRIER KIT WITH TRIM REFERENCE RINGS TO ALLOW HEIGHTS FROM 1-1/4" [32MM] TO FLAT (SYNTHETIC TURF WITH INFILL TO TRACK MATERIALS APPLICATIONS)
- ⑯ HUNTER ST-BKT1600 ROTOR HANGER AND ELEVATION ADJUSTMENT BRACKET
- ⑰ HUNTER ST-1600B ROTOR
- ⑱ ISOLATION VALVE: BUTTERFLY TYPE WITH GROOVED CONNECTIONS (INCLUDED WITH ST-BVF30K)
- ⑲ HUNTER ST-FRP1600 MATERIAL ATTACHED TO FLATTENED ST-IBS1600 USING HUNTER ST-ADH ADHESIVE AND APPROVED PROCEDURES
- ⑳ WRAP FLEXIBLE INLET PIPING WITH HEAVY-DUTY PLASTIC PIPE WRAP TAPE PRIOR TO BACKFILL AND COMPACTION
- ㉑ BASE PAD AS SPECIFIED, 42" X 48" [107 X 122CM] MINIMUM

SECTION VIEW



*ENCLOSURE DIMENSIONS
 4 - PIECE COVER - 24" X 36" [50CM X 76CM]
 EXPOSED RIM - 26" X 38" [66CM X 96.5CM]
 OVERALL HEIGHT - 36" [76CM]



SYNTHETIC TURF KIT (STK-5V) WITH REMOTE VALVE IN SYNTHETIC TURF

Hunter® STK.5V.01

NO SCALE